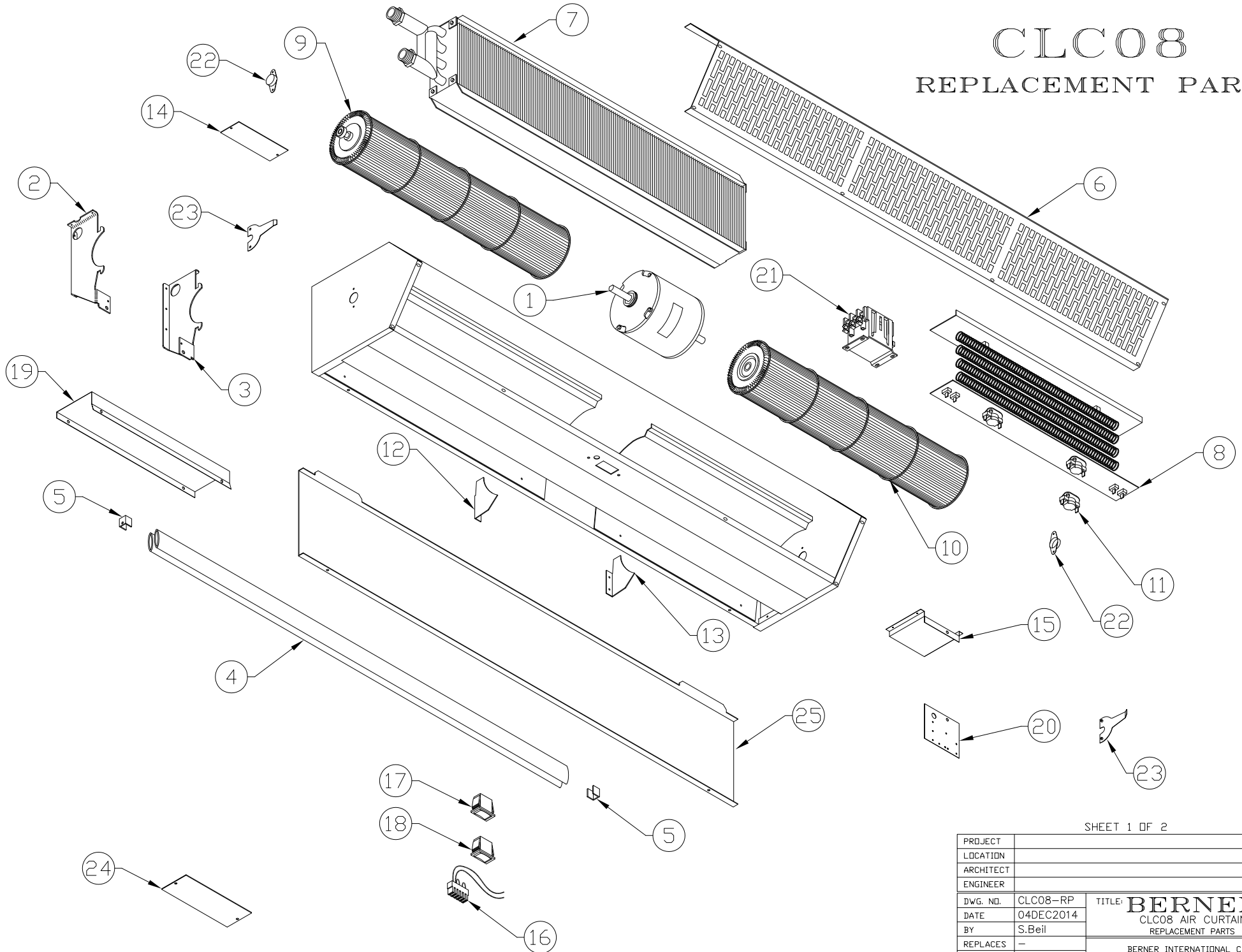


CLC08

REPLACEMENT PARTS



SHEET 1 OF 2

PROJECT		
LOCATION		
ARCHITECT		
ENGINEER		REV. -
DWG. NO.	CLC08-RP	TITLE: BERNER
DATE	04DEC2014	CLC08 AIR CURTAIN
BY	S.Beil	REPLACEMENT PARTS
REPLACES	-	BERNER INTERNATIONAL CORP. NEW CASTLE, PA.
BY	-	

CLC08

REPLACEMENT PARTS

ITEM	DESCRIPTION	PART #
1	MOTOR, 1/5 HP, (120V, 1PH)	011F5042F3X18A
1	MOTOR, 1/5 HP, (208/240V, 1PH)	011F5042F3X18B
1	MOTOR, 1/5 HP, (480V, 1PH)	011F5042F3X18H
1	MOTOR, 1/5 HP, (600V, 1PH)	011F5042F3X18Q
2	MOTOR BASE LEFT BRACKET - STANDARD	40EZ012MMC-1F5-L
2	MOTOR BASE LEFT BRACKET - STAINLESS STEEL	40EZ012MMC-1F5-L-SS
3	MOTOR BASE RIGHT BRACKET - STANDARD	40EZ012MMC-1F5-R
3	MOTOR BASE RIGHT BRACKET - STAINLESS STEEL	40EZ012MMC-1F5-R-SS
4	NOZZLE VANE (specify vane length - inches)	06ALM516ARF-121
5	NOZZLE VANE CLIP	40GEN-NVC
6	INLET SCREEN - STANDARD (specify length - inches)	40EZN***IS
6	INLET SCREEN - STAINLESS STEEL (specify length - inches)	40EZN***IS-SS
7	STEAM/HOT WATER COIL (specify length - inches)	10S***06F108S
8	ELEC. HEATER ASSM - 14", 5.0 KW (208V)	11ZPR014B050D
8	ELEC. HEATER ASSM - 14", 5.0 KW (240V)	11ZPR014B050E
8	ELEC. HEATER ASSM - 14", 5.0 KW (480V)	11ZPR014B050H
8	ELEC. HEATER ASSM - 14", 5.0 KW (600V)	11ZPR014B050I
8	ELEC. HEATER ASSM - 20", 5.4 KW (208V)	11ZPR020B072E
8	ELEC. HEATER ASSM - 20", 5.4 KW (240V)	11ZPR020B072H
8	ELEC. HEATER ASSM - 20", 7.2 KW (208V)	11ZPR020B072D
8	ELEC. HEATER ASSM - 20", 7.2 KW (240V)	11ZPR020B072E
8	ELEC. HEATER ASSM - 20", 7.2 KW (480V)	11ZPR020B072H
8	ELEC. HEATER ASSM - 20", 7.2 KW (600V)	11ZPR020B072I
9	BLOWER WHEEL - LEFT HAND (specify length - inches)	29T450S012A-L***
10	BLOWER WHEEL - RIGHT HAND (specify length - inches)	29T450S012A-R***
11	THERMAL CUT OUT	36A145-105-90
12	LEFT DIVERTER	40ZPR000D-L
13	RIGHT DIVERTER	40ZPR000D-R
14	WIRING COMPARTMENT COVER - STANDARD	40EZN000WC-C
14	WIRING COMPARTMENT COVER - STAINLESS STEEL	40EZN000WC-C-SS
15	WIRING CHANNEL - STANDARD	40EZ000WC
15	WIRING CHANNEL - STAINLESS STEEL	40EZ000WC-SS
16	MOTOR WIRING HARNESS, 1/5 HP, 120/208/240V	505WH115ARA
16	MOTOR WIRING HARNESS, 1/5 HP, 480/600V	505WH0006MC
17	ROCKER SWITCH, SNGL-20A, BEZEL MNT, DPDT, (FAN ON/OFF)	33A020B-DD
18	ROCKER SWITCH, SNGL-20A, BEZEL MNT, DPST, (FAN ON/OFF)	33A020B-DS-2
19	CONTACTOR MOUNTING PLATE, MAIN - STANDARD	40EZ000CMP-M
19	CONTACTOR MOUNTING PLATE, MAIN - STAINLESS STEEL	40EZ000CMP-M-SS
20	CONTACTOR MOUNTING PLATE, HI VOLT SPD - STANDARD	40EZ000CMP-Z
20	CONTACTOR MOUNTING PLATE, HI VOLT SPD - STAINLESS STEEL	40EZ000CMP-Z-SS
21	HEATER RELAY (SPECIFY MOTOR VOLTAGE)	9010DP40A3P***
22	BEARING CUP - (ships with blower wheel)	N/A
23	BEARING RETAINER - STANDARD	40EZN000BR-U
23	BEARING RETAINER - STAINLESS STEEL	40EZN000BR-U-SS
24	BERNER NAME PLATE	55BERN-2X5
25	WALL MOUNTING PLATE - STANDARD (specify length - inches)	40EZN***WMP
25	WALL MOUNTING PLATE - STAINLESS STEEL (specify length - inches)	40EZN***WMP-SS

*** SPECIFY LENGTH (IN INCHES)

** SPECIFY LENGTH (IN INCHES)

SHEET 2 OF 2

PROJECT		
LOCATION		
ARCHITECT		
ENGINEER		REV. -
DWG. NO.	CLC08-RP	TITLE: BERNER CLC08 AIR CURTAIN REPLACEMENT PARTS
DATE	04DEC2014	
BY	S.Beil	BERNER INTERNATIONAL CORP. NEW CASTLE, PA.
REPLACES	-	
BY	-	