



Drop-In Refrigerated Cold Wells

PRODUCT:

QUANTITY:

ITEM #:

Model: CW-1 CW-2 CW-3 CW-4 CW-5

Designed Smart

- The Countertop Cold Well is portable and provides an economic solution to the cost of in-counter refrigeration.
- Available in 4/3 size.
- Uses R-134a refrigerant.
- Can hold cold food at 34°F to 40°F for extended periods.
- Interior temperature is factory set, but can be field adjusted depending on unit's application.
- Unit has 5/8" recessed legs.
- Compression size 1/6 hp with an optional 5-year warranty available.



DROP-IN COLD WELL

Built Solid

- Stainless steel construction with fully insulated walls.
- Supplied with 6 ft. cord and NEMA 5-15P plug.

Reliability backed by APW Wyott's Warranty

- APW Wyott Refrigerated Topping Rails are backed by a 1-year parts and labor warranty, including on-site service calls within 50 miles of authorized service technicians.
- Certified by the following agencies:



APW Wyott Design Features

- Hinged cover
- Holds standard steamable pans
- Energy saving
- Field adjustable temperature

Options

- COMP-5 5-year compressor warranty

See reverse side for product specifications.



APW Wyott Foodservice Equipment Company · 729 Third Ave., Dallas, TX 75226
(800) 527-2100 · (214) 421-7366 · Fax (214) 565-0976 · www.apwwyott.com · info@apwwyott.com

Rev. 5/06/2008



Drop-In Refrigerated Cold Wells

PRODUCT:

QUANTITY:

ITEM #:

Model: CW-1 CW-2 CW-3 CW-4 CW-5

PRODUCT SPECIFICATIONS

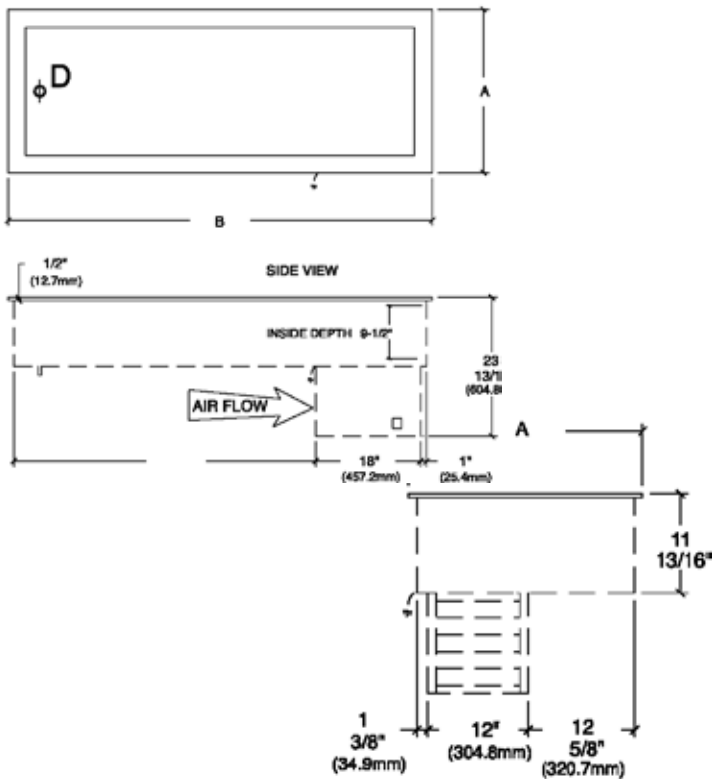
Construction:

Stainless steel construction with fully insulated walls. 5/8" legs included.

Shipping:

- CW-1: 121 lbs
- CW-2: 179 lbs
- CW-3: 203 lbs
- CW-4: 233 lbs
- CW-5: 327 lbs

F.O.B. Cheyenne, WY



ELECTRICAL

SPECIFICATIONS

MODEL	VOLTS	Hz	PHASE	AMPS	COMPRESSOR	CHARGE
CW-1	120	60	1	4	1/5 HP	9.0 oz. - R134A
CW-1	230	50/60	1	2	1/5 HP	9.0 oz. - R134A
CW-2	120	60	1	4	1/4 HP	10.0 oz. - R134A
CW-2	230	50/60	1	2	1/4 HP	10.0 oz. - R134A
CW-3	120	60	1	4	1/4 HP	11.0 oz. - R134A
CW-3	230	50/60	1	2	1/4 HP	11.0 oz. - R134A
CW-4	120	60	1	4	1/4 HP	12.0 oz. - R134A
CW-4	230	50/60	1	2	1/4 HP	12.0 oz. - R134A
CW-5	120	60	1	5.5	1/3 HP	13.0 oz. - R134A
CW-5	230	50/60	1	2.8	1/3 HP	13.0 oz. - R134A

DIMENSIONS

MODEL	DIMENSIONS INCHES (mm)	RECOMMENDED CUT-OUT
CW-1	19-1/2" (495.3) x 28" (711.2) x 23-13/16" (604.8)	18" (457.2) x 26-1/2" (673.1)
CW-2	28" (711.2) x 32-13/16" (833.4) x 23-13/16" (604.8)	26-1/2" (673.1) x 31-5/16" (795.3)
CW-3	28" (711.2) x 46-1/8" (1171.6) x 23-13/16" (604.8)	26-1/2" (673.1) x 44-5/8" (1133.5)
CW-4	28" (711.2) x 59-7/16" (1509) x 23-13/16" (604.8)	26-1/2" (673.1) x 57-15/16" (1471.6)
CW-5	28" (711.2) x 72-3/4" (1847.9) x 23-13/16" (604.8)	26-1/2" (673.1) x 71-1/4" (1809.8)

*APW Wyott reserves the right to modify specifications or discontinue models without incurring obligation.



APW Wyott Foodservice Equipment Company · 729 Third Ave., Dallas, TX 75226
 (800) 527-2100 · (214) 421-7366 · Fax (214) 565-0976 · www.apwwyott.com · info@apwwyott.com

Rev. 5/06/2008
 # 1118