



# CMA-44L

Chemical Sanitizing  
44" Conveyor  
Dishwasher



## FEATURES:

- Auto re-fill system.
- 242 racks / 968 covers per hour.
- Economical to operate. Uses only .8 gallons of water per cycle.
- Single control switch activation.
- Unique 3-stage washing process provides pre-wash, power wash and final rinse all in a 44" machine.
- Brass rocker arm bearing (extends longevity) newly engineered.
- Automatic soil purging system filters wash water and traps plate debris into an external tray. Tray can be easily removed for dumping contents.
- All stainless steel construction offers durable performance and years of trouble free operation.
- Upgraded high load power contactors.
- Chemical resistant industrial 10kW heater is proven to be more durable than commercial grade heaters.
- Large 19" high opening accommodates larger items and utensils.
- Auto start/stop makes operation safe and easy.
- Easy to remove and replace curtains.
- Includes table limit switch and rack saver clutch system that protects the machine, dishracks and table from damage.
- Two speed settings available for optimum cleaning performance.
- Chemical resistant mixing chamber.
- Auto Fill.
- Built-in Poly Pro™ scrap accumulator.



Rack saver clutch system with brass rocker arm bearing protects the machine, dishracks and table from damage.



Strategically located spray arms with spray pattern positioned for additional wash coverage.



Large 19" opening accommodates larger items and utensils.



Shown with optional corner feed table. Available right or left.



Easy to remove wash arms with captive end caps. **Never lose another end cap again!**



Single action control switch with easy to read temperature gauges and complete operating instructions.

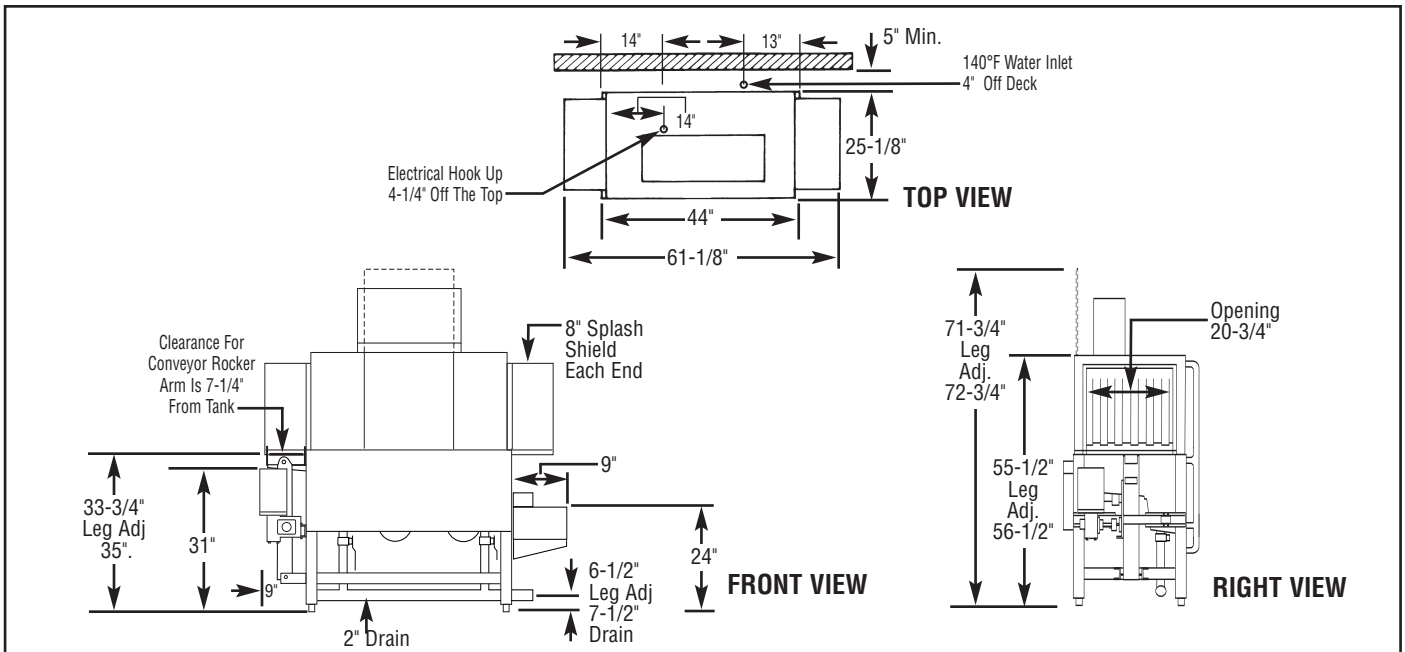




# CMA-44L

Chemical Sanitizing  
44" Conveyor  
Dishwasher

**WARNING:** Plumbing connections must be made by a qualified service company who will comply with all available Federal, State, and Local Health, Plumbing and Safety codes.



### Specifications:

|   | USA           | METRIC        |  | USA             | METRIC            |              |
|---|---------------|---------------|--|-----------------|-------------------|--------------|
| <b>OPERATING CAPACITY</b><br>RACKS PER HOUR (NSF RATED) | 242           | 242           | <b>DIMENSIONS</b>  |                 |                   |              |
| <b>CONVEYOR SPEED</b>                                   | 6.75 FT./MIN. | (206 CM/MIN.) | DEPTH  | 25-1/8"         | (64cm)            |              |
| <b>DRAIN</b>  | 2"            | -             | WIDTH  | 44"             | (111.7cm)         |              |
| <b>WASH PUMP MOTORS HP (2)</b>                          | 1             | 1             | HEIGHT   | 55-1/2"-56-1/2" | (140.97-143.51cm) |              |
| <b>CONVEYOR MOTOR HP</b>                                | 1/3           | 1/3           | STANDARD TABLE HEIGHT  | 34"             | (86cm)            |              |
| <b>WATER INLET - FILL</b>                               | 3/4"          | (1.9cm)       | MAX HEIGHT CLEARANCE FOR DISHES  | 19"             | (48cm)            |              |
| <b>WATER INLET - FINAL RINSE</b>                        | 1/2"          | (1.27cm)      | <b>STANDARD DISHRACK</b>   | 1               | 1                 |              |
| <b>DRAIN SIZE</b>                                       | 2"            | (5.1cm)       | DIMENSIONS   | 19-3/4"X19-3/4" | (50X50cm)         |              |
| <b>FINAL RINSE PRESSURE</b>                             | 20 ± 5psi     | (1.41 kg/cm²) | <b>ELECTRICAL RATING</b>   | <b>VOLTS</b>    | <b>PHASE</b>      | <b>AMPS</b>  |
| <b>WASH TANK CAPACITY</b>                               |               |               |  | 208             | 1                 | 64           |
| PRE-WASH  | 4.25 GAL      | (16.0 L)      |  | 240             | 1                 | 71           |
| WASH  | 11.75 GAL     | (44.5 L)      |  | 208             | 3                 | 36           |
| TOTAL   | 16.0 GAL      | (60.5 L)      |  | 240             | 3                 | 40           |
| <b>WASH PUMP CAPACITY</b>                               |               |               |  | 480             | 3                 | 17           |
| EACH  | 52 GPM        | (197 LPM)     | <b>BOOSTER HEATER</b>  | 208V/10kW       |                   | 240V/12.75kW |
| <b>OPERATING TEMPERATURE</b>                            |               |               | <b>SPECIFY DIRECTION OF RACK TRAVEL (RIGHT TO LEFT, LEFT TO RIGHT) WHEN ORDERING</b> |                 |                   |              |
| WASH  | 140°F-150°F   | (60°C/65.5°C) |  |                 |                   |              |
| FINAL RINSE   | 140°F-150°F   | (60°C/65.5°C) | <b>SHIPPING WEIGHT</b>   |                 |                   |              |
| <b>WATER CONSUMPTION</b>                                |               |               | APPROXIMATE  | 662#            |                   | (300kg)      |
| PER RACK (FINAL RINSE)                                  | .8 GAL        | (3 L)         |  |                 |                   |              |
| PER HOUR (FINAL RINSE)                                  | 192 GPH       | (726.6 LPH)   |  |                 |                   |              |

### Summary Specifications: Model CMA-44L

The Model CMA-44L low energy, chemical sanitizing conveyor dishwasher meets NSF, UL, and CUL sanitation and construction standards WITHOUT the use of a BOOSTER HEATER. The CMA-44L performs three separate washing functions including a built-in pre-wash, all in a 44" space. The CMA-44L washes up to 242 racks per hour and uses a minimum .8 gallons of water per rack while achieving sparkling, clean, dry dishes. Constructed entirely of stainless steel.

#### Available Models

- CMA-44L R/L Right to Left
- CMA-44L L/R Left to Right

#### Available Options

- Corner Feed Table (**FACTORY INSTALLED ONLY**)
- Alternative electrical options
- Also available at 205 or 167 racks/hr
- Stainless steel dishtables
- Vent Hood with 4" X 16" Vent and Damper Control (2 per set)
- Motor Cover

