

# Sushi & Tapas Display Cases



**VTP(SL) Series**

- VTP-139
- VTP-175
- VTP-139SL
- VTP-175SL

Item # \_\_\_\_\_

## Standard Features

- Our cases are designed with durability and elegance along with a unique dual refrigeration system (VTP-SL only).
- Stainless steel construction with plastic ends and anodized aluminum channels.
- Elegant curved front glass design with interior fluorescent lighting. (Lighting on VTP only).
- Cold plate design underneath the pans to keep products fresher and maintain products at 39° - 46° F temperature in food pans. Sushi case (VTP-SL) also includes refrigeration on top of food pans. Digital controller for enhanced performance.
- Interior will allow up to 11.5" plate for display and standard with interior grate for flush display of your products. Grate can be turned upside down to increase overall internal height and cooling capacity.
- Unit comes standard with Compressor mounted on the right side.

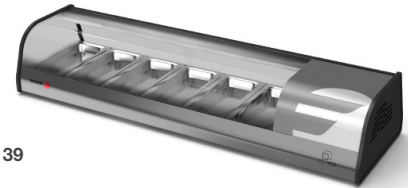
\*\* Refrigerated display case - Not for overnight storage

### Options & Accessories

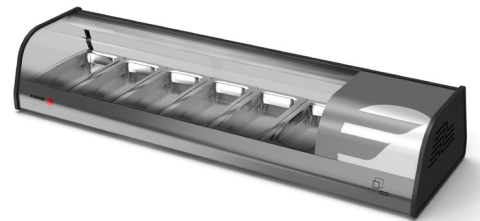
- 220 volts/ 50 cycles/ 1 phase



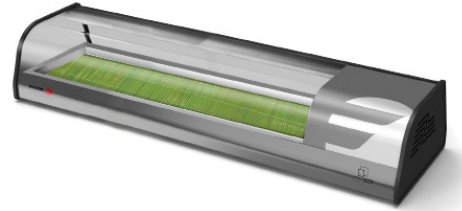
\*Conforms to UL & NSF-7 standards



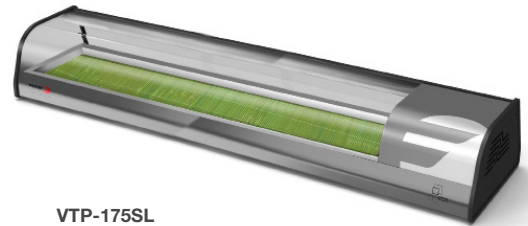
VTP-139



VTP-175



VTP-139



VTP-175SL

	Model	Pans	Volts	Amps	HP	Weight (lbs)	Cabinet Dimensions			Shipping (Wt. Cubes)	
							L	D	H		
Tapas	VTP-139	6	115	4.2	1/5	112	54-3/8" (1382 mm)	15-3/4" (381 mm)	9-5/8" (243 mm)	112 (50.8 Kg)	7.2 (.20 m³)
	VTP-175	8	115	4.2	1/5	135	68-3/8" (1737 mm)	15-3/4" (381 mm)	9-5/8" (243 mm)	135 (61.23 Kg)	10.5 (.30 m³)
Sushi	VTP-139SL	6	115	4.2	1/5	112	54-7/8" (1382 mm)	15-3/4" (381 mm)	9-5/8" (243 mm)	112 (50.8 Kg)	7.2 (.20 m³)
	VTP-175SL	8	115	4.2	1/5	135	68-3/8" (1737 mm)	15-3/4" (381 mm)	9-5/8" (243 mm)	135 (61.23 Kg)	10.5 (.30 m³)

\*Refrigerated display case - Not for overnight storage  
 \*\*All specifications are subject to change without notice

## Specifications VTP(SL) Series

### Construction

Heavy duty stainless steel construction with anodized aluminum profile. Sliding glass service door. Curved glass design.

Unit comes complete with CFC-Free polyurethane insulation, foamed in place.

### Refrigeration System

Self-contained capillary tube system using environmentally friendly (CFC Free) R-134a refrigerant. Static refrigeration below the pans. (SL) Large

evaporator coil on top / Bottom static refrigeration cold plate on bottom. Evaporator coil is mounted on the left side of the unit. Automatic condensate evaporator, no drain connection required. Evaporator condensate has been plumbed to a condensate pan located in the compressor housing. Access for the condensing unit behind the unit for easy cleaning and maintenance.

Cabinets are designed to maintain temperatures between 36° F to 46° F in the interior cabinet.

### Lights

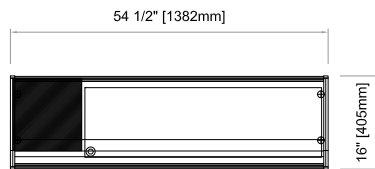
Interior fluorescent light / SL models have no lights.

### Others

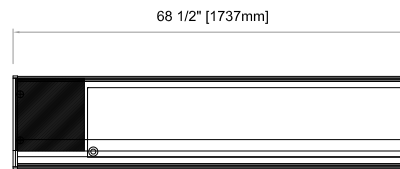
Unit is supplied standard with an 8' cord and plug (Nema 5-15p).

### Warranty

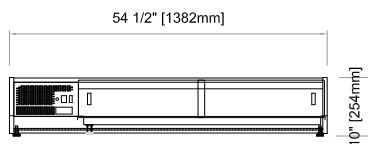
2 year parts and labor warranty plus 3 additional year compressor warranty. (Continental U.S.A. & Canada only).



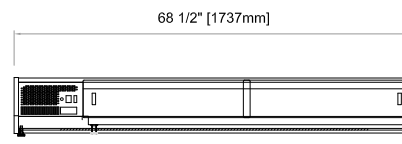
VTPSL-139 Top



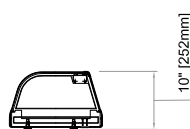
VTPSL-175 Top



VTPSL-139 Front



VTPSL-175 Front



VTPSL-139  
Common  
End View

The manufacturer reserves the rights to modify materials and specifications without notice.

