

32E Series - Endless Design Single Duty - Red Meat

• PRODUCT SPECIFICATIONS SHEETS



• Cases are designed to operate at 75 degrees Fahrenheit and 55% relative humidity

Self-Contained Remote	SC-CMS32E-4 R-CMS32E-4	SC-CMS32E-6 R-CMS32E-6	SC-CMS32E-8 R-CMS32E-8
Length with (2) ends	50"	74"	98"
Length without ends	48"	72"	96"
Height with ends	49-5/8"	49-5/8"	49-5/8"
Height without ends	49"	49"	49"
Depth with ends	30-1/2"	30-1/2"	30-1/2"
Depth without ends	29-1/2"	29-1/2"	29-1/2"
Endless Design	YES	YES	YES

(Dimensions are +/- 1/4")

• Specification subject to change without notice

32E Series – Endless Design Single Duty – Red Meat

Standard Specifications and Optional Features

<p>CONSTRUCTION UL Classified to ANSI/NSF 7 Foamed in place CFC free foam Triple pane insulated front glass-28"H Heavy gauge steel super structure Single duty display Endless design allows for continuous line up Drain is included for cleaning</p>	<p>FINISHES Satin finish extrusion on doors and door tracks Designer white exterior front and ends Stainless steel mirror trim Stainless steel heavy gauge top – 20" W Rear of unit is stainless steel brush finish at top Bottom rear is designer white aluminum</p>
<p>INTERIOR Designer white ends White aluminum floor-main deck area Epoxy coated main deck shelves Air insulated baffle (<i>prevents moisture from dripping into display area</i>)</p>	<p>REFRIGERATION Copevap system (<i>eliminates need for condensate pan</i>) R134a expansion valve system Gravity coil located at inside top of unit Humidity coil located at main deck (<i>provides extra humidity</i>) Self contained system Automatic defrost controlled by time clock-(<i>self contained units only</i>) Pressure control maintains constant temperatures Remotes available</p>
<p>EXTERIOR Double pane rear removable doors Newly designed rear compression door jamb Removable front grille allows for cleaning Removable rear grille for easy servicing 1" removable end panels</p>	<p>LIGHTING 2 Row of T12 lighting at top of unit</p>
<p>ELECTRICAL REQUIREMENTS 115V/60Hz/1Ph Unit must be hard wired UL/CUL listed 115V-12AMP general purpose receptacle (<i>wired separately</i>)</p>	<p><i>Important Note: All refrigerated cases are designed to operate in an environment of 75 degrees and 55% relative humidity.</i></p> <p><i>Important Note: Product must be cooled before being displayed within the case.</i></p>

OPTIONAL FEATURES

<p>Stainless steel, laminate, or paint Mirrored doors Stainless steel mezzanine shelf Front bumper 1" or 3"</p>	<p>Door locks Pass thru front doors Meat platters Red meat bulbs</p>
--	---



32E Series – Endless Design Single Duty – Red Meat

Technical Data

Model #	Self contained	SC-CMS32E-4	SC-CMS32E-6	SC-CMS32E-8
	Remote	R-CMS32E-4	R-CMS32E-6	R-CMS32E-8
Length with (2) ends Length without ends Height with ends Height without ends Depth with ends Depth without ends Endless design (Dimensions are +/- 1/4")		50" 48" 49-5/8" 49" 30-1/2" 29" YES	74" 72" 49-5/8" 49" 30-1/2" 29" YES	98" 96" 49-5/8" 49" 30-1/2" 29" YES
Operating temperature Refrigerant (expansion valve) Compressor size HP Pressure control settings @ 75°F, 55%RH Defrost per day (24 hours) BTU's at +20°F Evap. Temp. Voltage Amperage Amperage, lights only Cord and plug	Self contained Self contained CUT IN CUT OUT Air Defrost Remote Self contained Remote	34°F to 36°F R134a 1/4 30 12 1 per day 1400 115V 6.0A 0.8A No	34°F to 36°F R134a 1/3 30 12 1 per day 2100 115V 9.1A 1.6A No	34°F to 36°F R134a 1/2 30 12 1 per day 2800 115V 11.2A 1.6A No
Exterior color Interior color Inside end panels Floors # of top doors Door size # of coils Bottom storage Front glass # of main deck shelves Main deck size Cubic capacity (ft ³) Mezzanine Shelf		White Stainless White White 2 20-1/2"X23-1/2" 2 No 28"X46-11/16" 2 23-5/8"X25" 23 Optional	White Stainless White White 2 31"X23-1/2" 2 No 28"X70-11/16" 3 23-5/8"X25" 34.5 Optional	White Stainless White White 4 20-1/2"X23-1/2" 2 No 28"X94-11/16" 4 23-5/8"X25" 46 Optional

SHIPPING INFORMATION

Height		55"	55"	55"
Depth		44"	44"	44"
Length		61"	87"	115"
Gross weight	Self contained Remote	470# 430#	680# 630#	910# 860#
Cubic feet		85ft ³	122ft ³	161ft ³

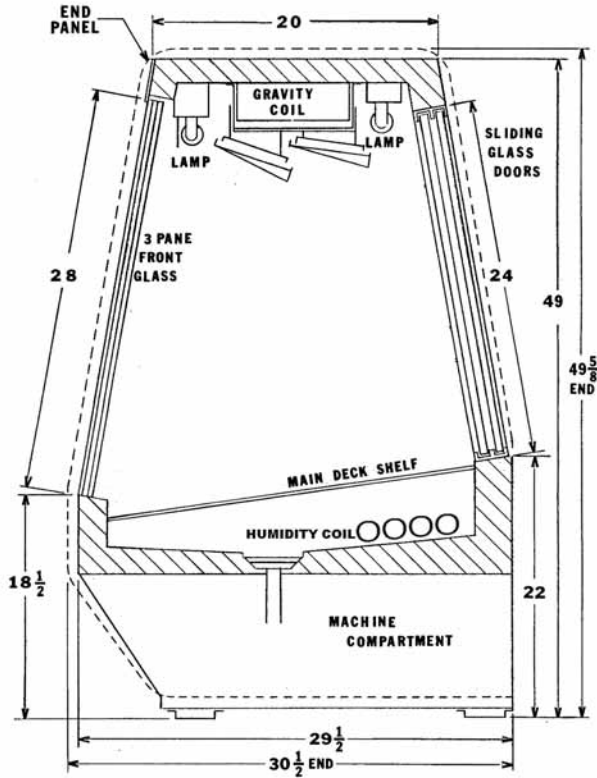
- Cases are designed to operate at 75 degrees Fahrenheit and 55% relative humidity
- Cases are equipped with drains; check your local building codes for connection requirements.
- Specification subject to change without notice

A Division of HMC Enterprises LLC • 2501 Grant Avenue • Philadelphia, PA 19114 USA

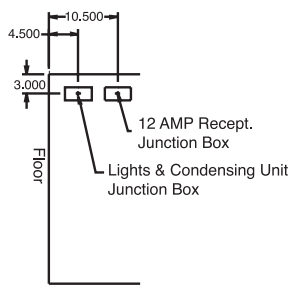
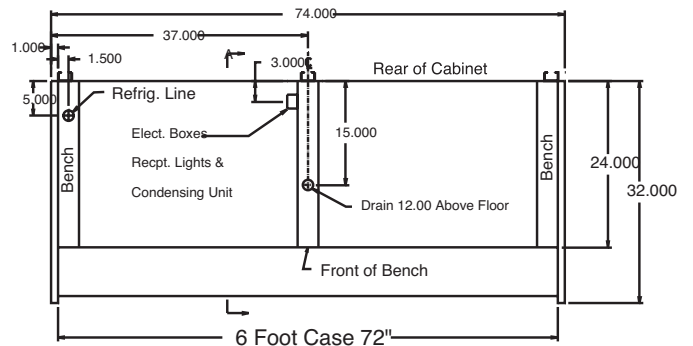
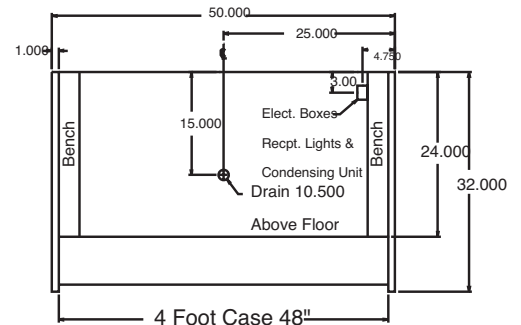
(215) 464-6800 • 1-800-344-8222 • Fax (215) 969-4890 • E-Mail: sales@howardmccray.com • www.howardmccray.com

32E Series – Endless Design Single Duty – Red Meat

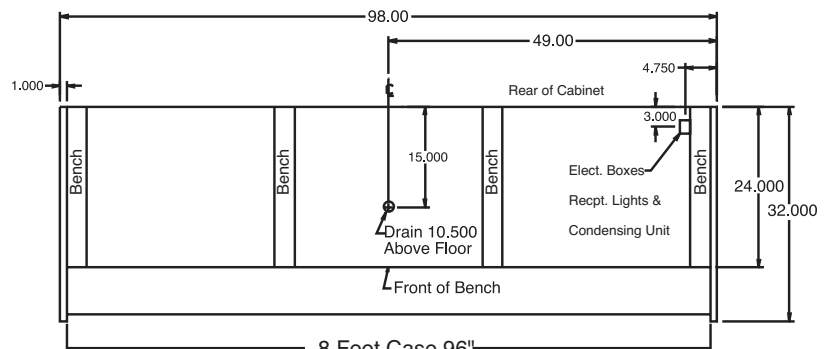
Technical Data • Side View • Plan View



Cross Section



Side View



Plan Views