



EasyInstall™

PRE-RINSE UNIT B-0133 Series (B-0133-B, Pre-Rinse Unit w/Wall Bracket)

Installation and Maintenance Instructions

Limited One Year Warranty (Commercial Applications)

T&S warrants to the original purchaser (other than for purposes of resale) that such product is free from defects in material and workmanship for a period of one (1) year from the date of purchase. During this one-year warranty period, if the product is found to be defective, T&S shall, at its option, repair and/or replace it. To obtain warranty service, products must be returned to.....

T&S Brass and Bronze Works, Inc.
Attn: Warranty Repair Department
2 Saddleback Cove
Travelers Rest, SC 29690

Shipping, freight, insurance, and other transportation charges of the product to T&S and the return of repaired or replaced product to the purchaser are the responsibility of the purchaser. Repair and/or replacement shall be made within a reasonable time after receipt by T&S of the returned product. This warranty does not cover items which have received secondary finishing or have been altered or modified after purchase, or for defects caused by physical abuse to or misuse of the product, or shipment of the products.

Any express warranty not provided herein, and any remedy for Breach of Contract which might arise, is hereby excluded and disclaimed. Any implied warranties of merchantability or fitness for a particular purpose are limited to one year in duration. Under no circumstance shall T&S be liable for loss of use or any special consequential cost, expenses or damages.

Some states do not allow limitations on how long an implied warranty lasts or the exclusion or limitation of incidental or consequential damages, so the above limitations or exclusions may not apply to you. Specific rights under this warranty and other rights vary from state to state.

Attention California Residents:

"WARNING: This product contains chemicals known to the State of California to cause cancer, and birth defects or other reproductive harm."

P/N: 098-014497-45 REV. 7
DATE: 10-10-17
DRAWN: TEH
CHECKED: DMH 10-26-17
APPROVED: JHB 11-01-17



Step 1:
Apply plumber's putty to backside of body and insert into mounting hole. Line up water supply lines and couplings, attach and tighten with wrench.



Step 2:
Apply plumber's tape to top of riser threads and attach to spring assembly. Tighten with wrench.



Step 3:
Make sure that the EasyInstall® locking washer is seated properly inside the faucet body.



Step 4:
Grab riser assembly and lower the EasyInstall® end-fitting into faucet body. Press down until the end-fitting "pops" in.



Step 5:
Lock the EasyInstall® locking nut in place and tighten with wrench.

Base Faucet Assemblies

1	Faucet Body Assembly w/ Eterna Cartridges	014209-40
	Faucet Body Assembly w/ Cerama Cartridges	015068-40
2	Asm, Quarter-Turn Eterna Cartridge, RTC (new style)	002712-40NS
	Asm, Quarter-Turn Cerama Cartridge, RTC (new style)	012446-25NS
3	Cartridge Only, Eterna w/ Spring Checks, RTC	012443-40NS
	Cartridge Only, Cerama w/ Check Valves, RTC	012394-25NS
4	Asm, Quarter-Turn Eterna Cartridge, LTC (new style)	002711-40NS
	Asm, Quarter-Turn Cerama Cartridge, LTC (new style)	012447-25NS
5	Cartridge Only, Eterna w/ Spring Checks, LTC	012442-40NS
	Cartridge Only, Cerama w/ Check Valves, LTC	012395-25NS
6	Handle, Lever	001638-45NS
	Handle, Wrist Action	B-WH4-NS
7	Screw, Handle	000925-45
8	Index, Button - Hot (Red)	001193-19NS
9	Index, Button - Cold (Blue)	018506-19NS
10	Asm, Coupling Flange	00AA
11	Washer, Coupling Nut	001019-45
12	Lock Washer, EasyInstall	014200-45

Riser Assembly

13	Nipple, 3/8" x 24"	000372-40
14	Swivel Assembly, EasyInstall	EZ-K
15	Swivel Piece	N/A
16	O-Ring, Swivel Piece	001065-45
17	Asm, Finger Hook & Screw	004R
18	Wall Bracket, 6" (add -B to model # for wall bracket)	B-0109-01

Pre-Rinse Unit Assembly

19	Spring Body	000821-40
20	Spring, Overhead	000888-45
21	Asm, Flexible Stainless Steel Hoses	B-0044-H
22	Asm, Spray Valve	B-0107

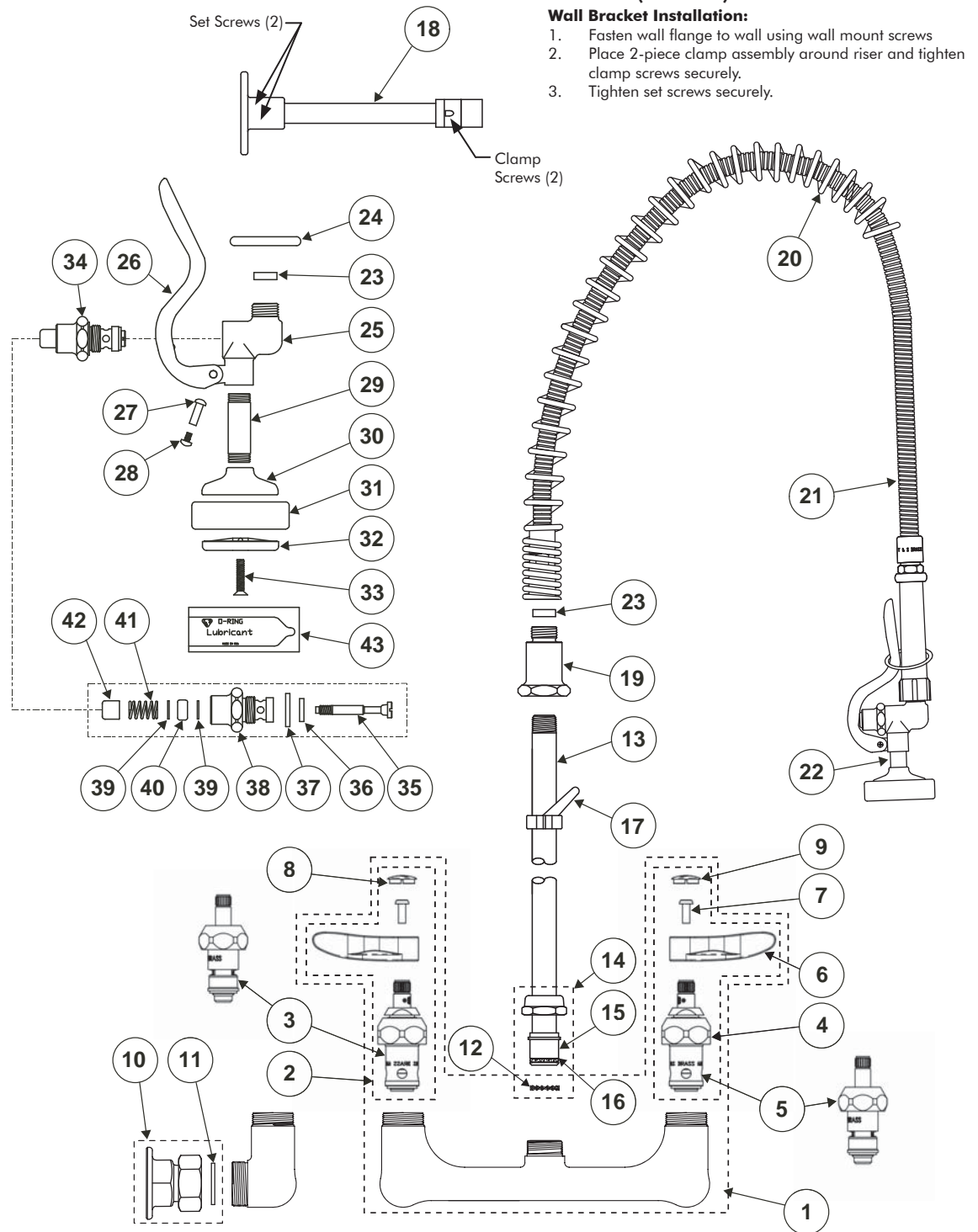
Spray Valve Assembly

23	Washer, Hold Down Assembly	010476-45
24	Ring, Hold Down Assembly	000907-45
25	Body, Spray Valve (no handle)	000065-40
26	Handle	001120-45
27	Nut, Handle	003198-45
28	Screw, Handle	003199-45
29	Nipple	000694-40
30	Cup, Spray	000019-40
*	31 Ring, Sprayhead	007861-45
*	32 Sprayface	001121-45
*	33 Screw, Sprayface	000913-45

Bonnet Assembly

34	Asm, Bonnet	002856-40
*	35 Stem	009306-20
*	36 Washer, Seat	012915-45
*	37 Washer, Bonnet Binding	001040-45
*	38 Bonnet	000608-25
*	39 Washer, Bonnet Brass	000974-45
*	40 Stem, Packing	001100-45
*	41 Spring, Bonnet	000895-45
*	42 Push Button	000753-25
*	43 Grease Pack (o-ring lubricant)	012665-45

* Parts included in B-10K parts kit



OPTIONAL (-B Models)

Wall Bracket Installation:

1. Fasten wall flange to wall using wall mount screws
2. Place 2-piece clamp assembly around riser and tighten clamp screws securely.
3. Tighten set screws securely.